

## Características

Renda Fixa CDI	44,91%
Renda Fixa Inflação	40,09%
Fundos de Participações	6,80%
Renda Variável	4,55%
Internacional Europa	1,56%
Fundo Imobiliário	1,10%
Internacional Global	0,81%
Empréstimos	0,17%



**Política de Investimentos:** Investe os recursos, principalmente, em cotas de fundos que atuam em diversos mercados, sem o compromisso de concentração em fator de risco específico.

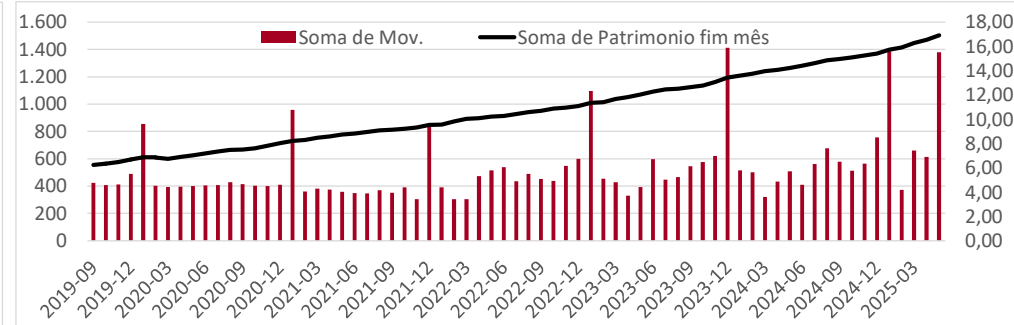
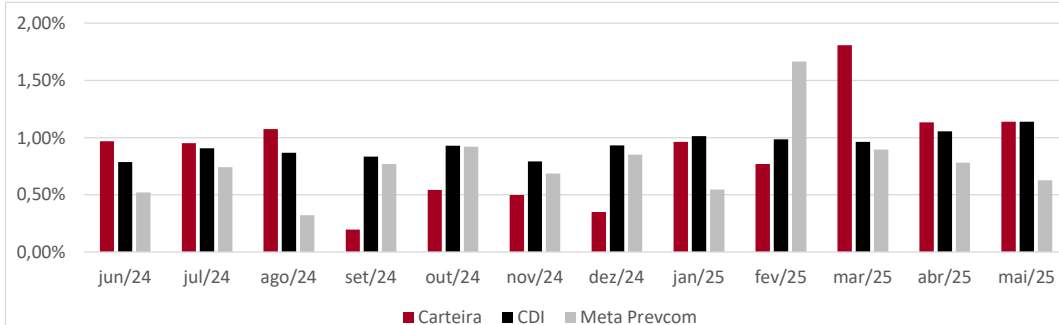
Meta Prevcom:  
 IPCA+5% até 04/20  
 IPCA+4% até 12/24  
 IPCA+4,5% 2025

Retorno (%)	Ano	12 meses	24 meses
Carteira	5,95%	10,91%	22,50%
CDI	5,26%	11,80%	25,21%
IPCA	2,75%	5,32%	9,45%
Meta Prevcom	4,59%	9,73%	18,56%
IMA-B5	5,57%	8,90%	18,63%
Poupança	3,30%	7,50%	15,55%
IBOVESPA	13,92%	12,23%	26,48%
MSCI World	-3,94%	22,14%	54,54%
MSCI Europe	9,11%	20,27%	44,09%

\* Cf. MP 567/12

## Gráficos

Retorno Mensal - Últimos 12 meses



Retorno Mensal (%)	mai/25	abr/25	mar/25	fev/25	jan/25	dez/24	nov/24	out/24	set/24	ago/24	jul/24	jun/24
Carteira	1,14%	1,14%	1,81%	0,77%	0,96%	0,35%	0,50%	0,54%	0,20%	1,07%	0,95%	0,97%
CDI	1,14%	1,06%	0,96%	0,99%	1,01%	0,93%	0,79%	0,93%	0,84%	0,87%	0,91%	0,79%
IPCA	0,26%	0,43%	0,56%	1,31%	0,16%	0,52%	0,39%	0,56%	0,44%	-0,02%	0,38%	0,21%
Meta Prevcom	0,63%	0,78%	0,89%	1,66%	0,55%	0,85%	0,69%	0,92%	0,77%	0,32%	0,74%	0,52%
IMA-B5	0,62%	1,76%	0,55%	0,65%	1,88%	-0,28%	0,36%	0,74%	0,40%	0,59%	0,91%	0,39%
Poupança	0,67%	0,67%	0,61%	0,63%	0,67%	0,58%	0,57%	0,60%	0,57%	0,57%	0,57%	0,54%
IBOVESPA	1,45%	3,69%	6,08%	-2,64%	4,86%	-4,28%	-3,12%	-1,60%	-3,08%	6,54%	3,02%	1,48%
MSCI World	6,58%	-0,69%	-6,38%	-0,50%	-2,58%	-0,45%	9,45%	3,90%	-2,06%	2,40%	3,59%	8,10%
MSCI Europe	4,66%	2,34%	-2,47%	3,86%	0,58%	-0,25%	2,83%	-0,27%	-3,38%	3,61%	3,98%	3,53%

## Composição da Carteira

## Retorno Nominal em % | Retorno Relativo ao índice de referência

Performance dos Fundos em Carteira			Mês			Ano		12 meses		Início do investimento		Volatilidade	Patrimônio R\$ milhões
Nome	Índice ref.	% PL	Início	Nominal	Relativo	Nominal	Relativo	Nominal	Relativo	Nominal	Relativo		
Bela Cintra FI RF	Meta Prevcom	35,52%	13/nov/13	1,05%	0,42%	5,47%	0,87%	11,03%	1,30%	266,00%	41,81%	0,52%	R\$ 530,53
Itaú Institucional Optimus RF LP FICFI	CDI	6,31%	29/abr/22	1,04%	91,12%	3,96%	75,19%	11,99%	101,60%	43,20%	99,17%	0,79%	R\$ 94,23
Itaú Institucional RF Referenciado DI	CDI	5,37%	15/fev/24	1,15%	100,79%	5,34%	101,36%	11,98%	101,52%	15,49%	102,16%	0,09%	R\$ 80,26
Itaú Inst Global Dinâmico RF	CDI	4,60%	20/fev/20	1,05%	92,12%	4,93%	93,61%	11,69%	99,04%	60,63%	104,26%	0,55%	R\$ 68,64
BTGP Economia Real FIP Multi	IPCA+6,5%	3,84%	19/out/20	-0,17%	-0,96%	12,31%	6,91%	10,91%	-1,23%	133,99%	54,20%		R\$ 57,33
Itau Inst BOV11 FIC FIA	Ibovespa	3,59%	04/ago/23	1,59%	0,14%	14,39%	0,47%	12,70%	0,47%	16,13%	1,47%	15,14%	R\$ 53,54
Itaú Institucionais Legend RF LP Fc	CDI	3,48%	02/out/19	0,89%	77,78%	4,89%	92,80%	12,52%	106,10%	70,93%	116,25%	1,70%	R\$ 51,94
BNP Paribas Cred Inst FICFI RF CP LP	CDI	3,16%	11/out/23	1,20%	105,19%	5,54%	105,15%	12,35%	104,62%	20,84%	106,52%	0,11%	R\$ 47,20
Itaú Inst RF Inflação 5 FICFI	IMA-B5	2,82%	19/jun/19	0,60%	-0,01%	5,49%	-0,08%	8,82%	-0,08%	63,71%	-1,84%	2,30%	R\$ 42,05
BB RF Referenciado DI Tit Pub	CDI	2,66%	20/fev/25	1,14%	99,76%					3,47%	99,14%	0,09%	R\$ 39,68
Itaú Soberano RF Simples LP FICFI	CDI	2,51%	02/set/19	1,13%	99,50%	5,23%	99,39%	11,74%	99,49%	60,78%	98,36%	0,09%	R\$ 37,51
Santander RF Ref DI Tit Público Hiper	CDI	2,31%	21/nov/24	1,14%	100,24%	5,29%	100,40%			6,48%	99,43%	0,10%	R\$ 34,47
XP Corporate Light FI RF CP LP	CDI	2,16%	24/jan/23	1,13%	99,27%	5,42%	102,92%	12,42%	105,24%	32,74%	106,30%	0,17%	R\$ 32,27
Sul America Cred Institucional ESG FI R	CDI	2,02%	21/jun/23	1,24%	109,11%	5,81%	110,39%	13,03%	110,39%	29,51%	121,31%	0,26%	R\$ 30,18
Bradesco RF Referenciado DI Federal E	CDI	1,92%	12/ago/24	1,12%	98,20%	5,15%	97,86%			9,33%	97,33%	0,09%	R\$ 28,61
Porto Seguro RF DI CP	CDI	1,58%	18/jul/24	1,17%	102,51%	5,46%	103,70%			10,59%	102,62%	0,12%	R\$ 23,62
Vot Allianzgi Euro Eq Growth FIM IE	MSCI Europe	1,56%	22/mai/19	7,13%	2,47%	1,81%	-7,31%	9,02%	-11,25%	105,42%	-1,69%	21,48%	R\$ 23,35
Sul América Excellence FI RF CP	CDI	1,51%	24/jan/23	1,16%	101,72%	5,43%	103,18%	12,43%	105,33%	33,60%	109,11%	0,14%	R\$ 22,54
Bradesco Inst FIC FI RF IMA-B5	IMA-B5	1,34%	16/ago/23	0,59%	-0,02%	5,43%	-0,14%	8,65%	-0,25%	14,68%	-0,66%	2,33%	R\$ 19,97
LFT	CDI	1,18%	05/dez/23	1,73%	151,77%	4,84%	91,96%	10,50%	88,98%	16,35%	92,91%		R\$ 17,66
BTG Pactual Inv de Impacto FIP Mult	IPCA+6,5%	1,17%	30/ago/21	-0,19%	-0,98%	20,54%	15,14%	19,48%	7,34%	47,34%	-9,76%	21,04%	R\$ 17,43
MAG Renda Fixa FI	CDI	1,12%	13/set/23	1,19%	104,57%	5,52%	104,87%	11,94%	101,21%	21,08%	101,77%	0,17%	R\$ 16,76
Inter Corporate RF Crédito Privado	CDI	1,01%	15/mai/24	1,16%	101,66%	5,33%	101,20%	12,02%	101,88%	12,46%	101,45%	0,10%	R\$ 15,02
BTG Pactual Créd Corp I FIQFI RF CP	CDI	0,92%	30/ago/21	1,22%	107,47%	5,98%	113,56%	12,99%	110,10%	59,23%	114,50%	0,22%	R\$ 13,69
Schroder Sustent Ações Globais IS IE	MSCI World	0,81%	24/mai/24	7,93%	1,34%	-4,98%	-1,04%	17,12%	-5,02%	16,25%	-7,43%	21,57%	R\$ 12,13
BTG Pactual Explorer Inst FI RF LP	CDI	0,67%	13/mar/24	1,37%	120,34%	5,46%	103,67%	11,50%	97,47%	11,67%	81,94%	0,84%	R\$ 10,08
AZ Quest Small Mid Caps Inst. FICFIA	SMLL	0,61%	09/jun/20	5,05%	-0,89%	15,48%	-9,64%	19,31%	9,57%	30,50%	34,96%	10,87%	R\$ 9,09
Pátria Private Equity Fund VII Feeder Ir	IPCA+7%	0,51%	28/set/23	0,00%	-0,83%	1,55%	-4,05%	18,09%	5,43%	17,01%	-4,78%		R\$ 7,57
BTG Pactual Economia Real II FIPM CLF	IPCA+8%	0,50%	04/mai/23	-1,87%	-2,78%	17,10%	11,10%	32,55%	18,84%	-2,34%	-30,88%		R\$ 7,44
Tivio Banks RF Crédito Privado FI	CDI	0,42%	10/nov/23	1,15%	101,40%	5,30%	100,72%	12,10%	102,54%	19,08%	103,37%	0,09%	R\$ 6,29
Spectra VI Institucional FIP Multiestrat	IPCA+8%	0,41%	31/mar/23	1,48%	0,57%	0,61%	-5,39%	-3,31%	-17,02%	43,26%	13,06%		R\$ 6,19
Santander RF IMA-B5 Premium FICFI	IMA-B5	0,41%	18/dez/23	0,60%	-0,02%	5,48%	-0,09%	8,77%	-0,13%	12,27%	-0,38%	2,30%	R\$ 6,13
Rio Bravo Renda Varejo FII	IFIX	0,37%	20/dez/23	0,71%	-0,73%	3,91%	-7,18%	-10,71%	-13,06%	-8,04%	-15,80%		R\$ 5,57
VBI Prime Properties FII	IFIX	0,36%	20/dez/23	-0,26%	-1,71%	7,71%	-3,39%	-8,14%	-10,49%	-11,67%	-19,43%		R\$ 5,45
Fator Verita Multiestratégia Imobiliári	IFIX	0,36%	22/jul/24	0,70%	-0,74%	11,71%	0,62%			-23,91%	-26,01%		R\$ 5,40
Vinci Selection Equities FIA	Ibovespa	0,36%	30/nov/22	2,70%	1,25%	14,55%	0,63%	9,88%	-2,35%	14,76%	-7,05%	13,51%	R\$ 5,35
Perfin Voyager FIP Infra	IPCA+6%	0,26%	13/jun/24	0,21%	-0,54%	18,18%	12,98%			84,68%	73,40%	30,11%	R\$ 3,85
Carteira de Empréstimos	CDI	0,17%	05/dez/23	1,73%	151,77%	4,84%	91,96%	10,50%	88,98%	16,35%	92,91%		R\$ 2,59
Vinci Partners IV Feeder	IPCA+6%	0,09%	25/abr/24	-2,29%	-3,04%	-3,33%	-8,53%	-32,45%	-44,06%	-11,85%	-24,66%		R\$ 1,40
BTG Pactual Infraestrutura III FIP Multi	IPCA+8%	0,03%	02/jul/24	-5,86%	-6,77%	-1,65%	-7,65%			-38,37%	-51,05%		R\$ 0,42

Patrimônio Total: R\$ 1.493,42